

TURLEY GALLERY

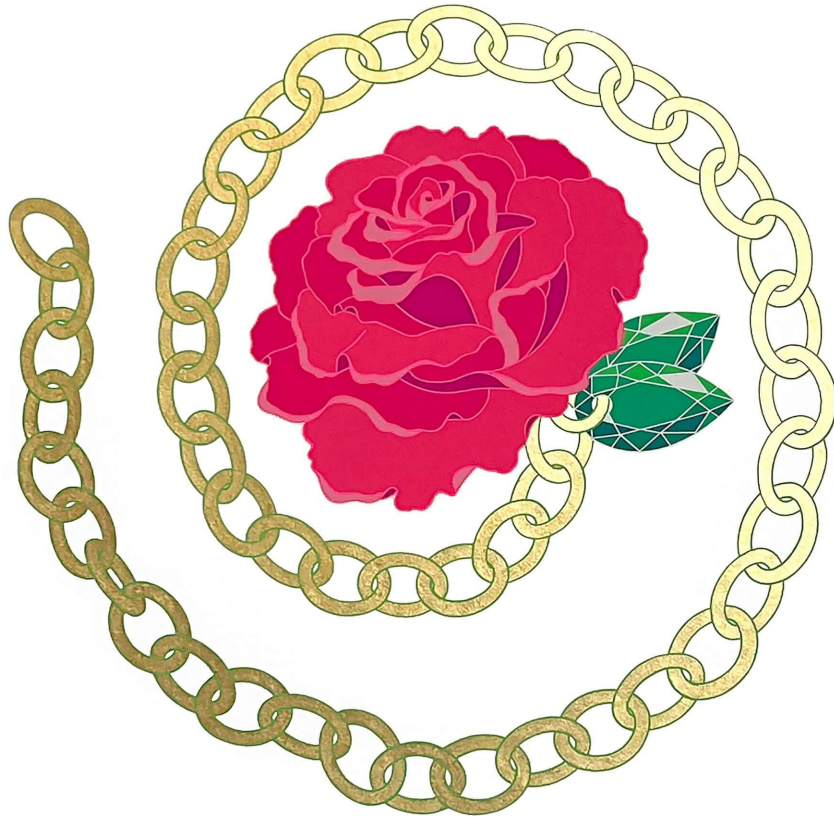
The Drawing Room

Amelia Toelke

Flourish

May 6–May 28, 2023

Opening reception Saturday, May 6, 3–5 PM



Amelia Toelke, *In Bloom*, 2022, 24K gold leaf and gouache on paper, 23 x 23 inches

FOR IMMEDIATE RELEASE

Flourish presents a solo exhibition of paintings and drawings from Amelia Toelke in The Drawing Room.

TURLEY GALLERY



Amelia Toelke, *Meteor Shower*, 2021, 24K gold leaf, gouache, and latex paint on paper, 23 x 23 inches

Amelia Toelke

Flourish depicts improbable objects and joyful vignettes. The work merges the material world with natural phenomena while evoking ephemeral experience. Gold chains freeze time, twisting into patterns and stylized into stems and vines. Gemstones shine as leaves and petals while abstracted flowers blossom into extravagant pendants.

Jewelry is a profound part of being human. As our personal signage, jewelry slips between private and public space, performing complex social functions. It communicates who we are and who we want to be. By taking jewelry off of the body and onto the page, *Flourish* explores the unique relationship between identity, culture, and ornament. When rendered graphically in gold leaf and gouache, chain, stone, and charms are jewelry and symbol simultaneously.

The compositions both substitute and transcend the form and function of language, leaving fleeting echoes of exuberance and sentimentality. The physicality of gold leaf, and the time-consuming process of gilding, imbues a tactility to the work. As these pieces catch the light at different angles they radiate with the history of adornment, the magnificence of imagination, and the impression of the artist's hand.

Turley Gallery is open Friday–Sunday, 12–5 PM, and by appointment.

For press and sales inquiries, please email info@turley.gallery.

Please visit www.turley.gallery for more information.